



The **2015 Epic at Buffalo Creek** is focused on re-routing lower **Morrison Creek Trail** just up from it's intersection with FS Rd. 543. This section of trail has moved left, or right, many times over the past several years depending on the severity of seasonal rain events. Our goal is to develop a new alignment that is sustainable on this section of Morrison Creek Trail and perform a bit of reclamation on the old alignment. The hike up to the Project Area is very minimal providing relatively easy access. **VERY COOL!!!** Please review a bit of detail below for our **2015 Epic at Buffalo Creek**.

Colorado Trailblazers provide . . .

- We'll supply **Breakfast** Saturday morning . . . **Bagels, Spread, Juice, & Coffee.**
- When we're done with the trail work on Saturday, there will be a **catered Dinner** in the evening with entertainment and some adult beverage.
- You will awaken Sunday morning to a **catered Breakfast** before enjoying the trails, or just hanging out at the campground.
- All **Tools** and **Leadership** to build great trail.

Directions . . .

- Please see the **Topo maps** below for **directions to Meadows Group Campground and Trail Day Staging Area** on Saturday, 9/19. Note that the campground opens at 11:00 am on Friday morning, 9/18, and closes at 4:30 pm on Sunday, 9/20. Most people prefer to set up camp in the upper campground
- If you are just coming out for the **Trail Day** on Saturday, 9/19, directions **From Denver** are described on the 2015 Epic at Buffalo Creek Map below.
- If you are camping at Meadows Group Campground you have **two options** for getting to the **Staging Area**:

❖ **Ride** your MTB .5 mi. from the Campground to FS Rd. 550, turn right on FS Rd. 550, then make almost an immediate left through a gate onto FS Rd. 543. The Staging Area is approximately 2 mi. east on FS Rd. 543, probably 15-20 minutes, the **Better Option**.

OR . . .

❖ **Drive** out of the Campground to FS Rd. 550, turn right for 5 mi. to Highway 126, then turn left (north) for 4 mi. to FS Rd. 543 (Buffalo Creek Rd.), then west 3.5 mi. on FS Rd. 543, probably 30-35 minutes.

- **On Trail Day, 9/19**, plan your travel to **arrive** around **8:30 am** at the **Staging Area**. Also, please note that FS Rd. 550 and 543 are gravel and FS Rd. 543 is single lane so be mindful of your speed and respectful to local residents, hikers, and bikers.

Volunteers need to bring . . .

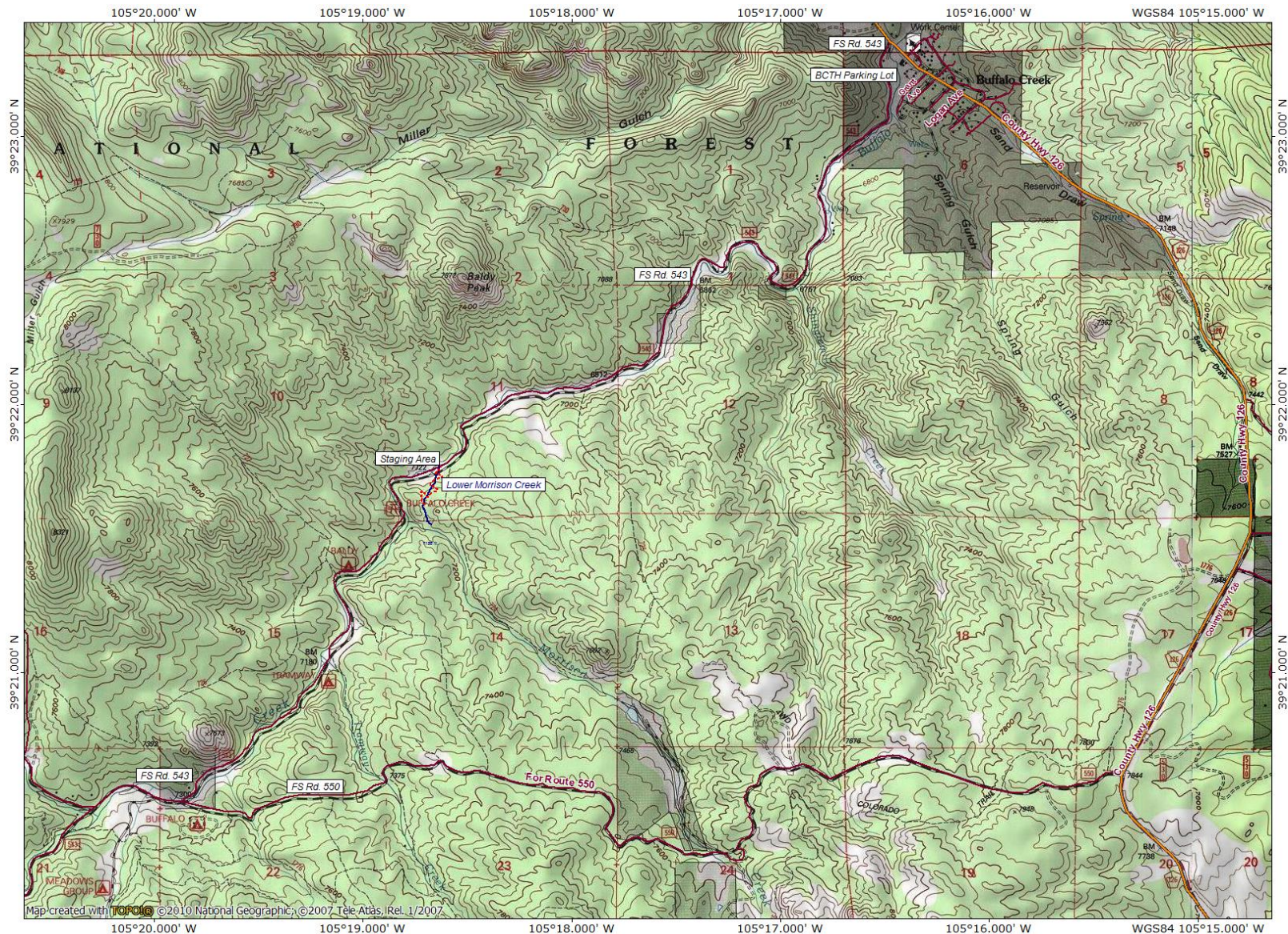
- **Enthusiasm** and **energized muscles** to help us build these great trails for our community!
- **Wear** comfortable work clothes . . . **long pants, long sleeve shirt, and boots!**
- Bring a **lunch, snacks and lots of water** for during the day while on trail!
- Don't forget **work gloves, a hat, sunglasses, sunscreen, and jacket**, just in case!

Directions to Meadows Group Campground from Pine Junction, CO



From **Pine Junction, CO/ U.S. Hwy. 285** turn **South** on **County Hwy. 126** and proceed through Pine Grove and Buffalo Creek for approximately 13.5 miles. Turn **West** onto **FS Rd. 550** (gravel road) from **County Hwy. 126** for approximately 5 mi. to the entrance drive for **Meadows Group Campground** on your left.

2015 Epic at Buffalo Creek Trail Day Map & Directions



From Denver take U.S. 285 south to County Highway 126, Pine Junction, then turn left (south) at the traffic light onto Highway 126. Continue south for approx. 10 mi. to Buffalo Creek, CO. Turn right (west) on FS Rd. 543 (Buffalo Creek Rd.) shortly after crossing the N. Fork of the S. Platte River. **We ask that you carpool to the extent possible at the Buffalo Creek Trailhead parking lot as we only have room for 8-10 vehicles at the Staging Area. The Staging Area is approximately 3.5 miles west on FS Rd. 543 through (3) gates. Volunteer attendants will be located at the parking lot and gates to direct you and answer any questions.**

From Meadows Campground bike or drive out to FS Rd. 550, then turn right (east) on FS Rd. 550 (bikers will make an immediate left onto FS Rd. 543) drivers continue approx. 5 mi. to Highway 126 then left (north) 4 mi. to FS Rd. 543 (Buffalo Creek Rd.). Turn left (west) onto FS Rd. 543, then follow the directions above.